



Smoke Outlook

Mid Columbia Gorge Whisky, Williams, Sandstone

8/09 - 8/10

Issued by [Wildland Fire Air Quality Response Program](#) on August 09, 2024 at 09:24 AM PDT

Special Statement

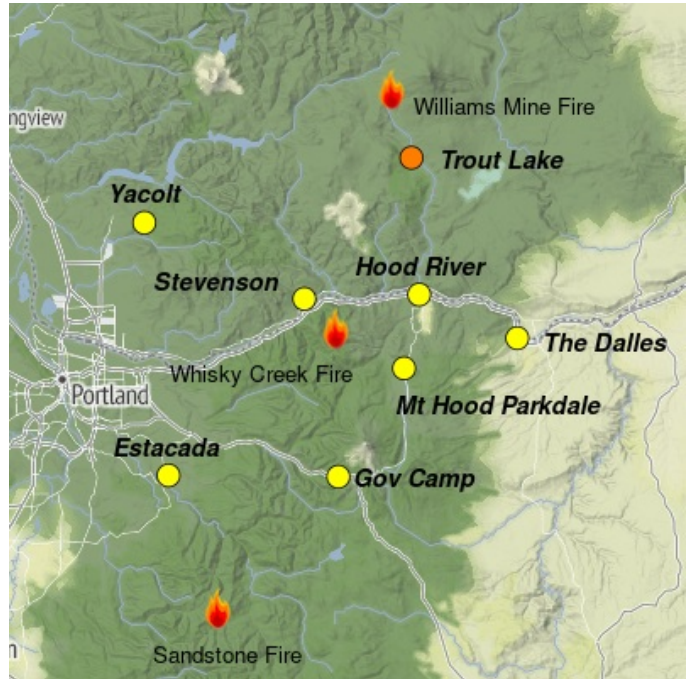
An Air Quality Advisory is in effect for southwestern Washington until 1 PM PDT Friday, August 9 due to smoke and ozone. Pollutants can cause burning eyes, itchy throat, and other health problems. More information can be found at www.swcleanair.gov and www.oregon.gov/DEQ.

Fire

On the Whisky Creek Fire, crews complete and monitor indirect handlines while helicopters with buckets drop water directly on any active fire. Today, winds will be terrain-driven and temperatures in the upper 80s are expected. The Whisky Creek Fire is currently 1671 acres.

Smoke

On Friday, winds will be more terrain-driven and keep smoke in the Columbia Gorge area. Winds are expected to shift to westerlies Friday evening. Smoke pooling is expected during overnight hours, increasing smoke concentrations in localized areas. West winds will occur on Saturday, and air quality in general will be between Good to Moderate.



Daily AQI Forecast* for Friday

Station	Yesterday hourly			Thu 8/08	Comment for Today -- Fri, Aug 09	Forecast*	
	6a	noon	6p			Fri 8/09	Sat 8/10
Yacolt					Moderate air quality today improving through the weekend with west winds.		
Stevenson					Air quality mostly Moderate today with improvement this weekend.		
Trout Lake	No hourly data				Shifting winds will bring smoke from Williams Mine Fire to the Trout Lake area.		
Hood River	No hourly data				Calming winds will bring degraded air quality values.		
Estacada					Good to Moderate air quality today and improving this weekend.		
Gov Camp					Moderate air quality today and improves through the weekend.		
The Dalles					In general, air quality will be Moderate to Unhealthy for Sensitive Groups.		
Mt Hood Parkdale					Moderate air quality is expected		

Issued Aug 09, 2024 by Aaron Piña (202-603-2292)

Air Quality Index (AQI)	Actions to Protect Yourself
Good	None
Moderate	Unusually sensitive individuals should consider limiting prolonged or heavy exertion.
USG	People within Sensitive Groups* should reduce prolonged or heavy outdoor exertion.
Unhealthy	People within Sensitive Groups* should avoid all physical outdoor activity.
Very Unhealthy	Everyone should avoid prolonged or heavy exertion.
Hazardous	Everyone should avoid any outdoor activity.

***Disclaimer:** This forecast is based on fine particulates only; ozone is not included. Forecasts may be wrong; use at own risk. Use caution as conditions can change quickly. See your health professional as needed. Smoke sensitive groups should take appropriate precautions.

Additional Links

[Oregon DEQ](http://www.oregon.gov/DEQ) -- <http://www.oregon.gov/DEQ>



Issued by Interagency Wildland Fire Air Quality Response Program -- www.wildlandfiresmoke.net
Mid Columbia Gorge Updates -- <https://outlooks.wildlandfiresmoke.net/outlook/104f92cf>

*Smoke and Health Info -- www.airnow.gov/air-quality-and-health